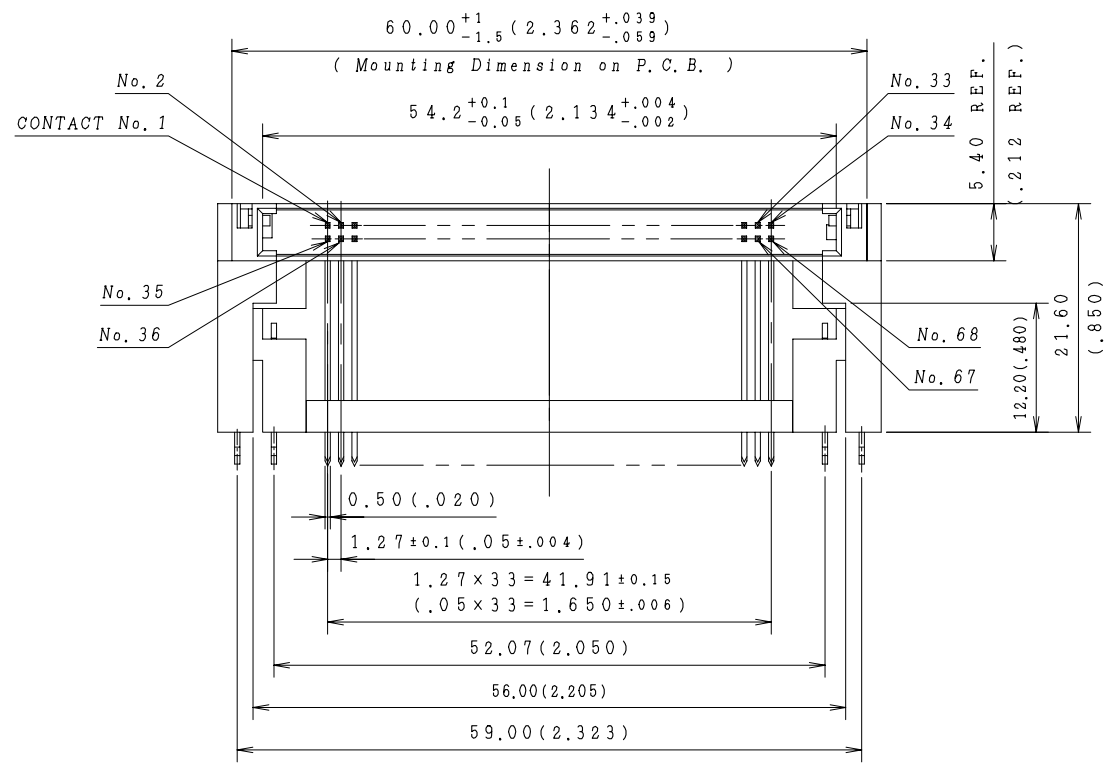
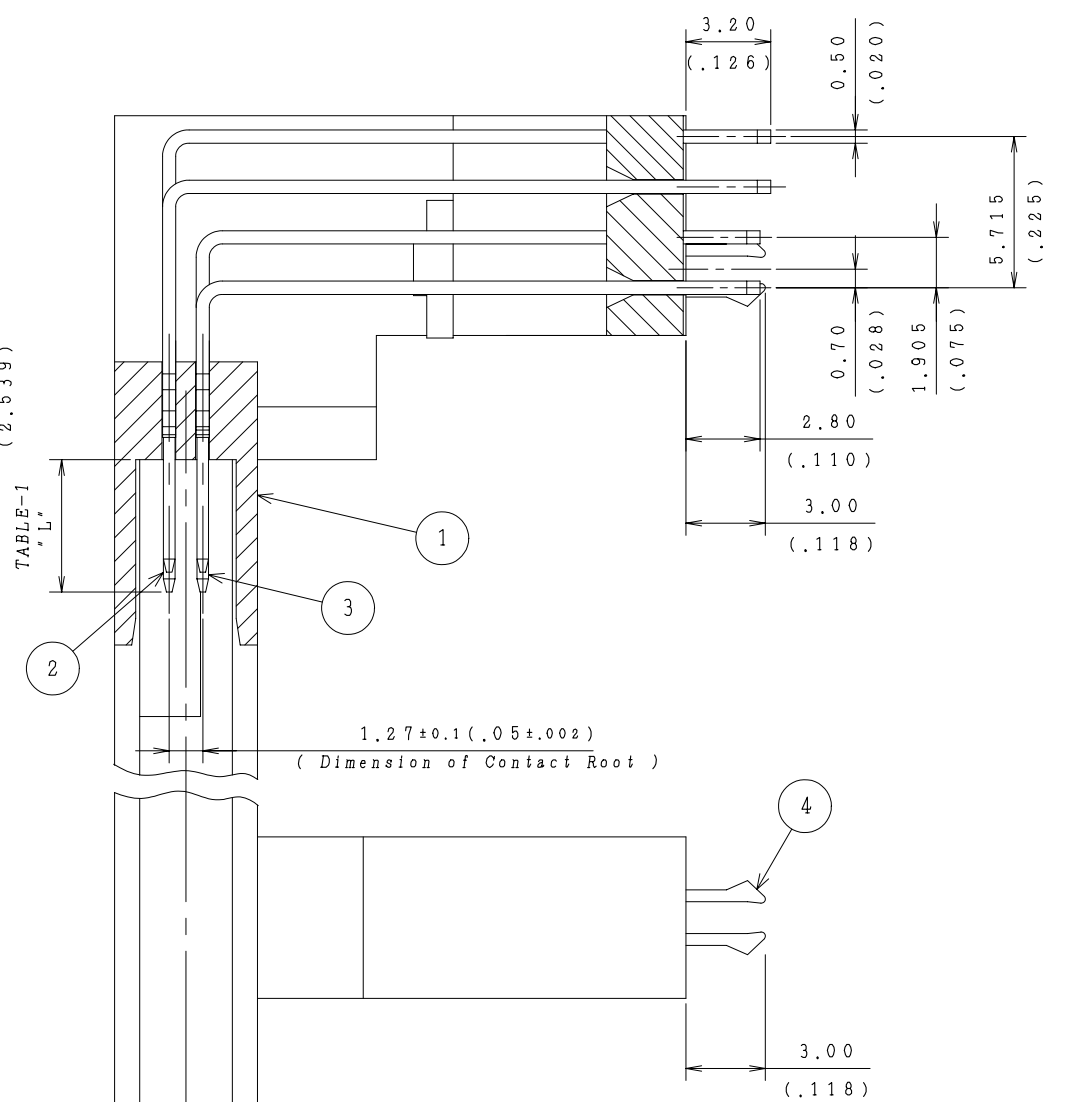
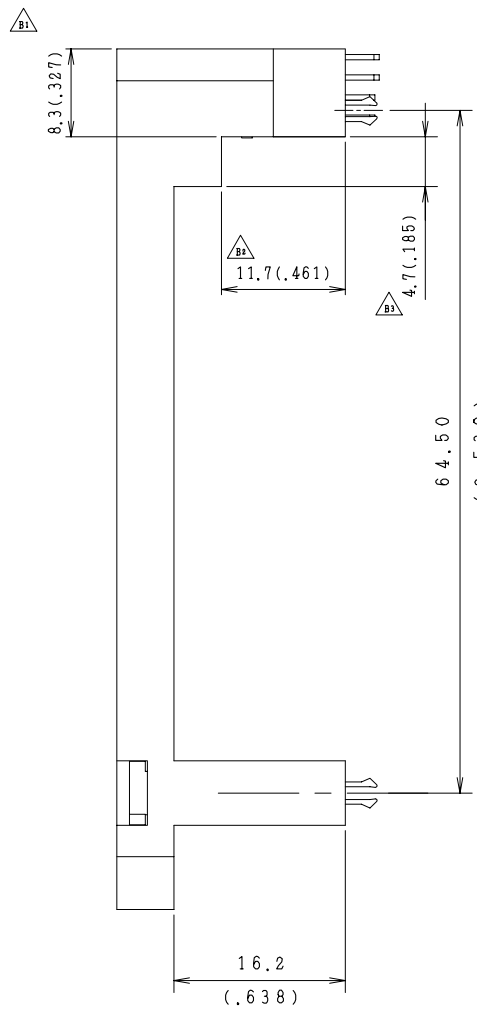
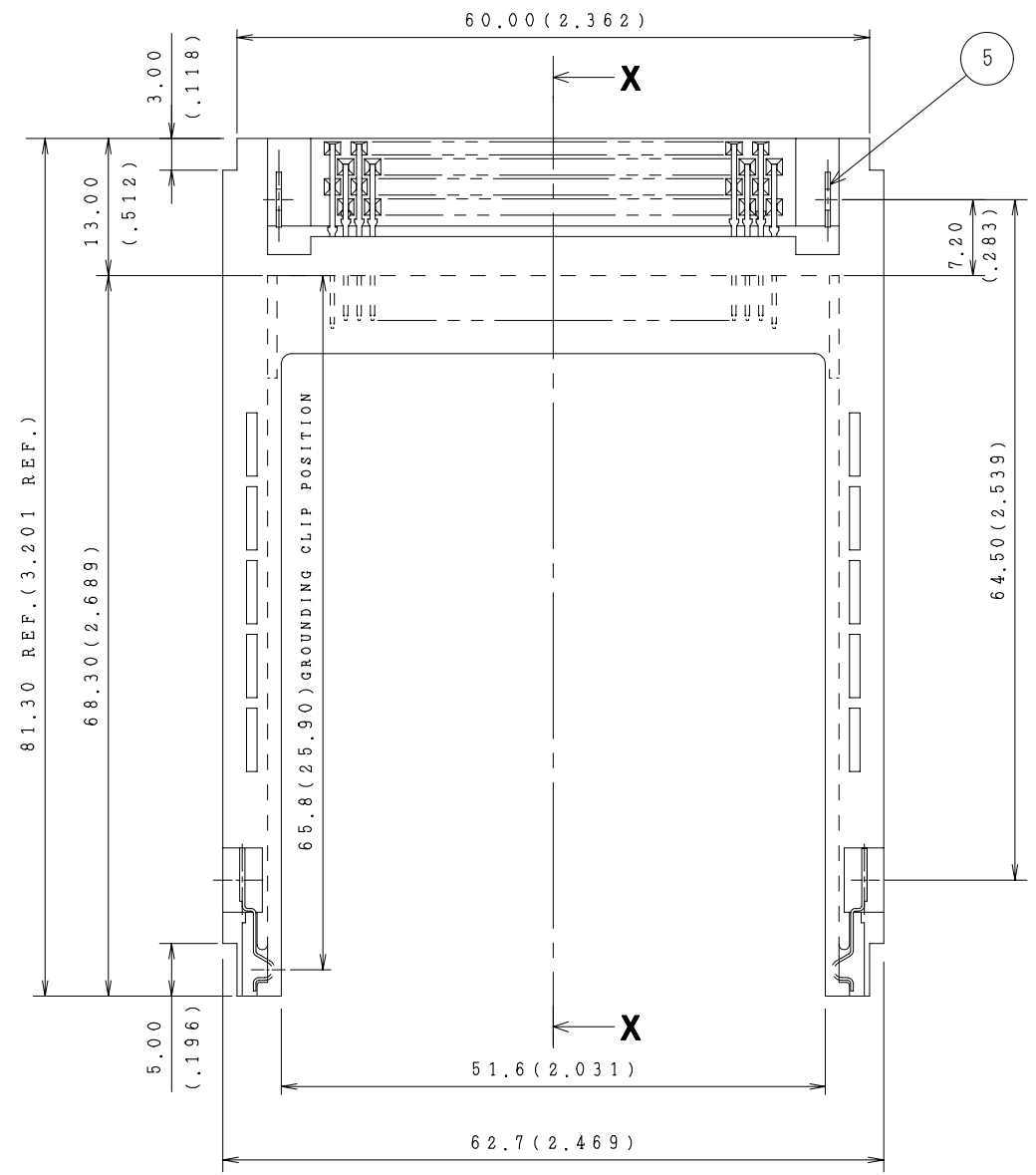


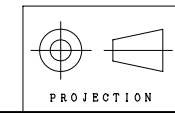
SYM	DATE	ZONE	DESCRIPTION	DESIGNED	CHECKED	APPROVED DATE
A	Mar. 23, 2005		Initial Issued			
B	Apr. 26, 2005		Changed Housing Style	S. Misawa	J. Mashiya	J. Mashiya Apr. 26, 2005



Section X-X
(Scale: 5/1)

QTY.	ITEM	PART NAME	MATERIAL	FINISH, OTHER
2	5	Board Lock	Copper Alloy	See Note-7
2	4	Grounding Clip	Copper Alloy	See TABLE-2
3	4	Pin Contact (Under)	Brass	See TABLE-2
3	4	Pin Contact (Upper)	Brass	See TABLE-2
1	1	Insulator	PBT Resin	Color: Black UL94V-0 Rated

APPROVED	DESIGNED	GENERAL TOLERANCE	TITLE
M. Hida	S. Misawa	DIMENSIONS ±0.30 ANGLE ±5°	PCMCIA, Pin Header Connector (Dip Type, with stand-off 16.2 mm)
Mar. 23, 2005	Mar. 23, 2005	(±.012)	MCD-768PAJ (D1) -***
CHECKED	DRAWN BY	SCALE	DRAWING NUMBER
M. Hida	S. Misawa	2/1	(For Pace Micro Technology PLC.)
Mar. 23, 2005	Mar. 23, 2005	mm (inch)	C20095-1(1/2)



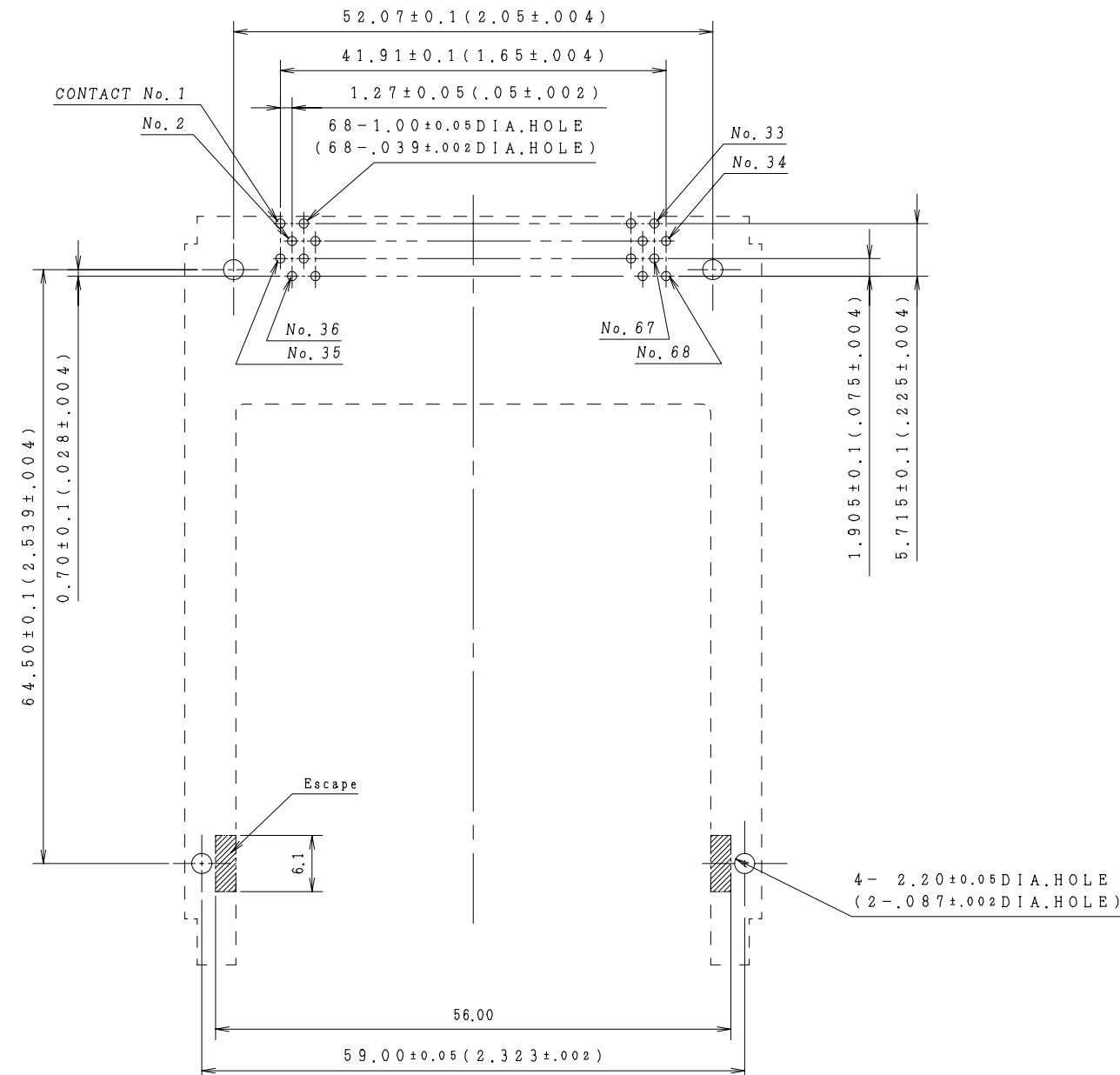
SYM	DATE	ZONE	DESCRIPTION	DESIGNED	CHECKED	APPROVED DATE

TABLE-1 (Contact Configuration)

Contact Number	Contact Type	L : Contact Length
Contact Number: 1, 17, 34, 35, 51, 68	Power/Ground	5.00±0.10(.197±.004)
Contact Number: 36, 67	Detect	3.50±0.10(.138±.004)
All Other Contacts	General	4.25±0.10(.167±.004)

TABLE-2 (Contact Plating)

Part Number	Mating Area	Termination Area
MCD-768PAJ(D1)	Pin Contact	Gold(0.38 μm (15 μinch) Minimum) over Nickel Plating
	Grounding Clip	Gold Flash over Nickel Plating
MCD-768PAJ(D1)-FA	Pin Contact	Gold(0.38 μm (15 μinch) Minimum) over Nickel Plating
	Grounding Clip	Gold Flash over Nickel Plating



The Direction of Inserting Card
Recommended PCB Mounting Dimensions
Connector Mounting Side View
Recommended P.C.B. Thickness
t=1.60±0.19 (.063±.007)

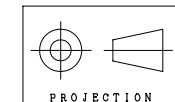
Part Numbering Code

MCD-768PAJ(D1)-FA
1 2 3 4 5 6 7

- Series Name
MCD: DDK Memory Card Connector Series
- Contact Mating Side Pitch
7: 1.27 mm
- Number of Contact
68: 68 Contacts
- Mating Style
P: Plug Connector
- Connector Style
AJ: With Stand-off(16.2 mm)
- Housing Style
(D1): Housing front length escape
- Type of Contact Tail Area
Plating Specification ; See Table-2
No Designation : Tin-Lead Plating
-FA : Tin-Silver Plating

Specifications

- Voltage Rating
: 125 Volt AC(rms)
- Current Rating
: 0.5 Ampere/Contact
- Dielectric Withstanding Voltage
: 500 Volt AC(rms) for 1 Minute at Sea Level
- Insulation Resistance
: 1000 Mega Ohm Minimum at 500 Volt DC



QTY.	ITEM	PART NAME	MATERIAL	FINISH, OTHER

APPROVED	DESIGNED	GENERAL TOLERANCE	TITLE
M. Hida	S. Misawa	DIMENSIONS ANGLE ±0.30 ±5° (±.012)	PCMCIA, Pin Header Connector (Dip Type, with stand-off 16.2 mm) MCD-768PAJ(D1)-***
Mar. 23, 2005	Mar. 23, 2005	SCALE UNIT	DRAWING NUMBER
CHECKED	DRAWN BY	2 / 1	(For Pace Micro Technology PLC.) C 2 0 0 9 5 - 1 (2 / 2)
M. Hida	S. Misawa	2 / 1	REV. B
Mar. 23, 2005	Mar. 23, 2005	1 (inch)	