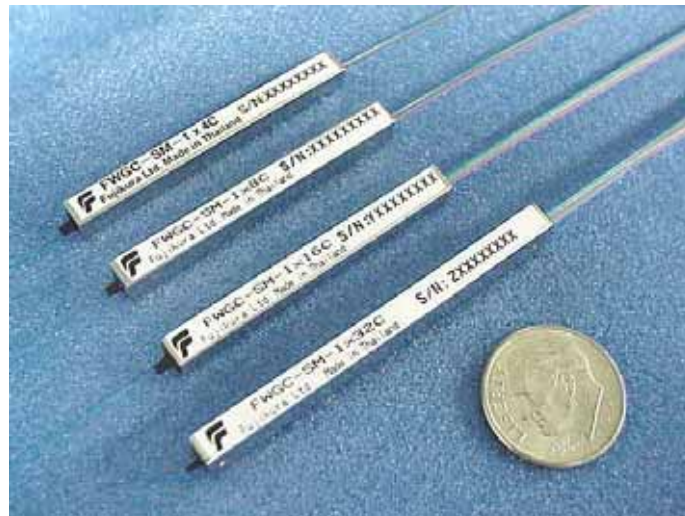


## Mini PLC splitter



Fujikura mini PLC splitter is an optical splitter device utilizing optical waveguide technology. Fujikura Mini PLC splitter achieved higher reliability with higher order and is suitable for splitter device in optical network.

### Features

- ◇ Same size as mechanical splice device (4x4x40mm)
- ◇ Improved suitability for placing in closure tray and termination box tray
- ◇ Low excess loss, excellent uniformity, flat wavelength characteristics

### Applications

- ◇ FTTH network
- ◇ LAN network
- ◇ Coupler device

## Mini PLC splitter

Item	Unit	1x4	1x8	1x16	1x32
Type	-	FWGC-SM-1x4C	FWGC-SM-1x8C	FWGC-SM-1x16C	FWGC-SM-1x32C
Operating wavelength	nm	1310 ± 20 , 1490 ± 10 , 1550 ± 20			
Operating temperature	degC	-40 ~ +85			
Insertion loss	dB	≤ 7.8	≤ 11.0	≤ 14.5	≤ 18.0
Uniformity	dB	≤ 0.8	≤ 1.0	≤ 1.5	≤ 2.5
Polarization depending loss	dBp-p	≤ 0.3			≤ 0.4
Reflection loss	dB	≥ 50			
Lead fiber	-	Single-mode fiber (SM10/125)			
Input port	-	φ 250μm UV coating single fiber			
Output port	-	4-single-mode fiber ribbon x 1	8-single-mode fiber ribbon x 1	8-single-mode fiber ribbon x 2	8-single-mode fiber ribbon x 4
Fiber length (each port)	m	≥ 1			
Package dimensions	mm	4 x 4 x 40			4 x 6.5 x 50



### Headquarters

1-5-1, Kiba, Koto-ku, Tokyo 135-8512, JAPAN  
 Tel: +81 3 5606 1168 or 1203 Fax: +81 3 5606 1535  
<http://www.fujikura.co.jp/>  
[opt-device@fujikura.co.jp](mailto:opt-device@fujikura.co.jp)

Specifications subject to change without prior notice